

staron[®]
Solid Surfaces

LOTTE CHEMICAL CALIFORNIA INC.

6 Centerpointe Dr. Suite 300, La Palma, CA 90623
LOTTE@lccalifornia.com

Copyright © 2024 LOTTE CHEMICAL Co., Ltd.
Printed in KOREA



staron[®]
Solid Surfaces

Your Design Solution

Downy Dove **SP105**



Downy White

STRETCH YOUR IMAGINATION WITH STARON FOR INFINITE POSSIBILITIES.

TIMELESS BEAUTY

From intricately detailed veining to lustrous muted waves

The upgraded **Supreme Collection** draws its inspiration from the timeless allure of marble, featuring the mesmerizing movements and intricate crack patterns found in nature. Each exquisite design captures the authentic colors and detailed patterns of genuine stone. Delivering an impeccably smooth surface with timeless elegance.

Experience the timeless charm of Downy Grey with deep textures and enduring design with various light performances. Downy Cream and Downy Dove embrace the touch of tranquility to your interior design with feather-like soft colors and subtle patterns.

Find the beauty and practicality in one surface for your next project.

Discover our superior surfaces in the new **Supreme Collections**.



RELIABLE PERFORMANCE

- Cutting-edge technology sets a new standard in surface
- inconspicuous repairment available for its homogenous composition



HYGIENIC SURFACE

- Non-porous surface inhibits growth of mold or bacteria
- Resistant to heat and abrasion
- Refurbishment to a new condition available



DIMENSIONAL FLEXIBILITY

- Thermo-formable into three-dimensional shapes
- Excellent workability for unlimited design possibilities



INFINITE RANGE OF COLORS

- Over 150 color options ranging from natural to vivid
- Ongoing collaboration with color trend experts to stay commercially relevant



IMPERCEPTIBLE SEAMS

- Consistent color and texture on every sheet provides a smooth and seamless surface
- Installed without gaps, crevices, or obvious joint-lines



TRANSLUCENCY

- Creative back-lighting effects via diversified material thickness, allowing transmission from low-energy light source



GLOBAL NETWORK

- Regional branch offices and worldwide product distribution networks



RELIABLE QUALITY

- Advanced quality control policy and a commercial 10-year warranty
- Certified eco-friendly by Greenguard and Scientific Certification System

NEW
ECLIPSE COLLECTION

Meet the Eclipse collection that encapsulates the durability of natural stones interwoven with everyday fleeting moments, infused with a subtle shimmer of luxury.



Eclipse White SW412



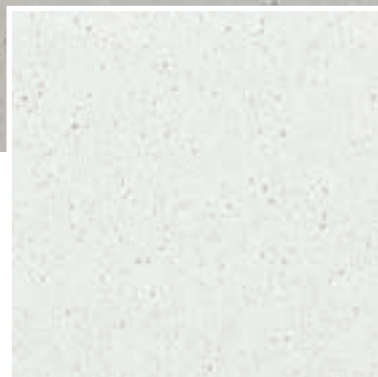
Eclipse Luna SL477



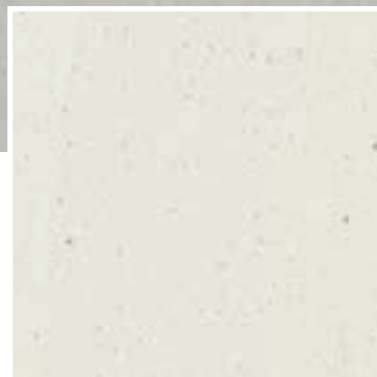
Eclipse Cream SC444

NEW
STUCCO COLLECTION

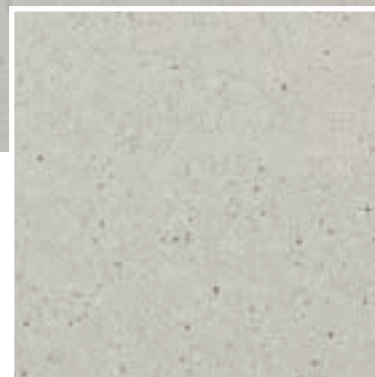
Introducing the Stucco Collection
reinterpreted by Staron
– lime, fine sand, and other elements
are blended into a paste and
applied for a textured wall finish,
enhanced with the hues of nature.



Stucco Cotton NC912



Stucco Angora NA972



Stucco Earth NE945

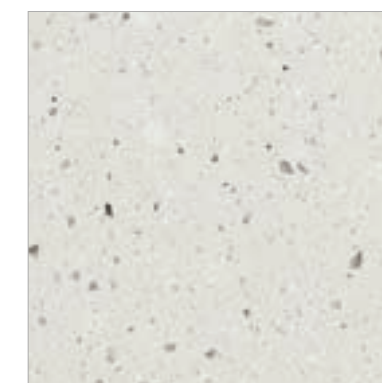
NEW

TEMPEST STELLA COLLECTION

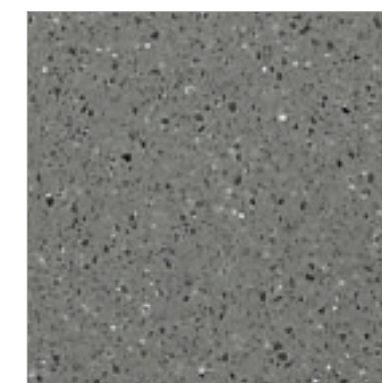
Maintaining the sophistication of
Staron's Tempest collection,
the Tempest Stella collection is reintroduced,
blending emotive colors with luxurious allure.



Lyra FL175



Vela FV126

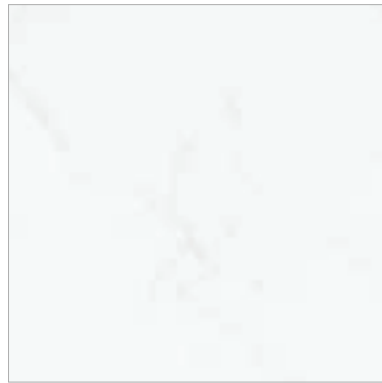


Grus FG188

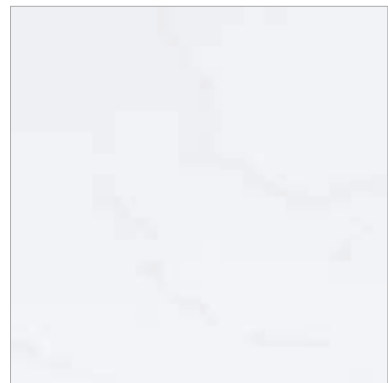
Supreme



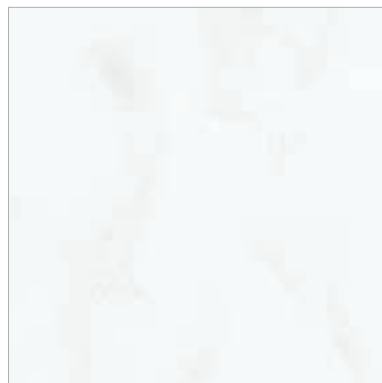
Arctic White VA311



Morning Sky VM114



Cotton White VC110



Delphi VD111



Morning Sky

Supreme



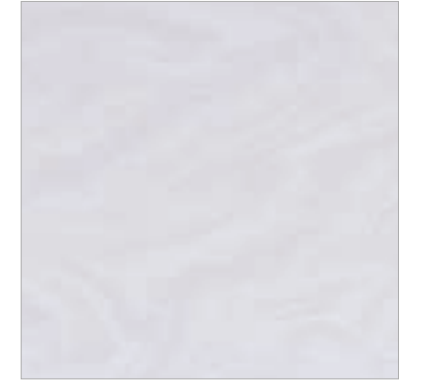
DownyWhite SF100



Tranquil VT115



DownyCream VC343



Snowfall VS324



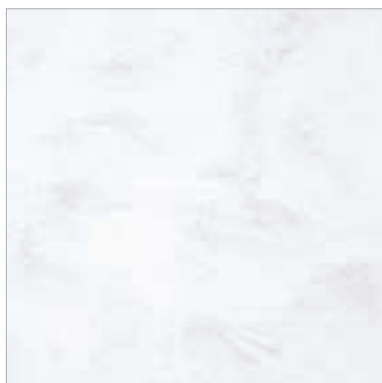
Rotor Cloud VR322



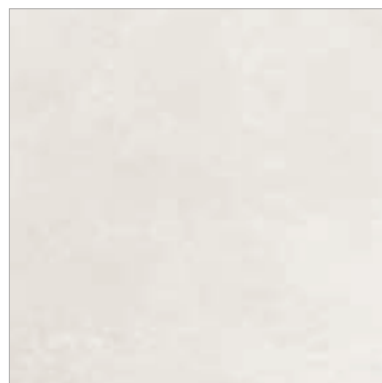
Downy Dove SP105

Supreme

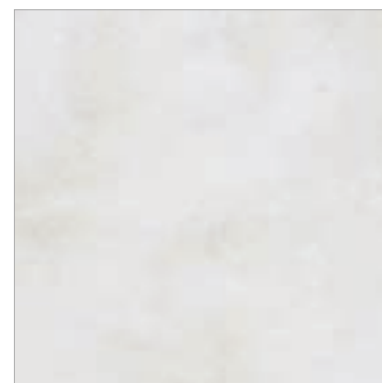
Latte Cream



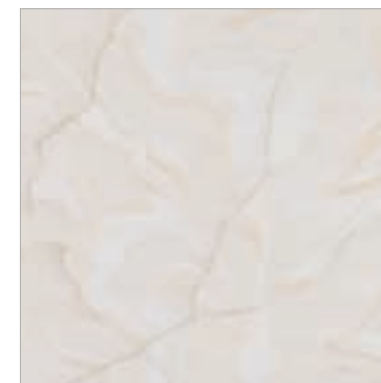
Downy Grey VG321



Flux VF113



Reno VR184



Latte Cream VL343

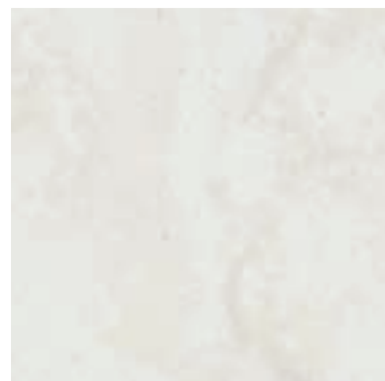
Supreme



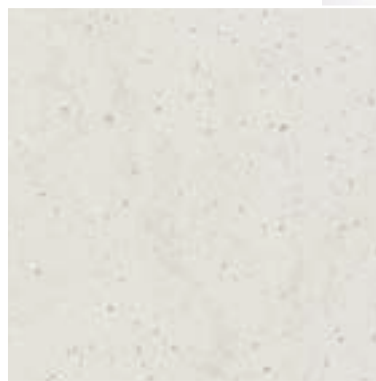
Ocean View VO171



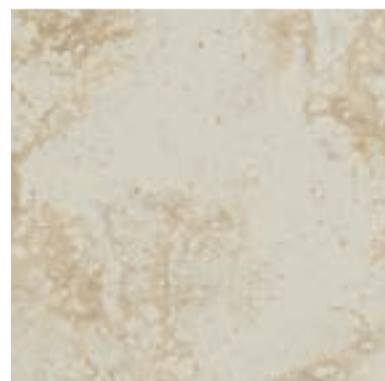
Beige Granite
VB172



Magnolia VM143



Natural Bridge
VN144



Dandelion VD175

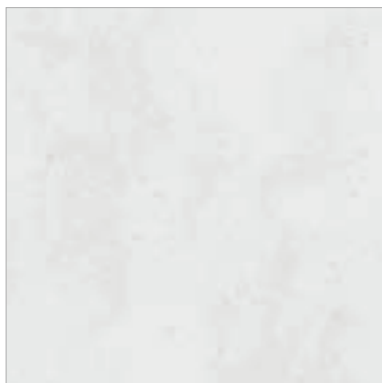


Dandelion

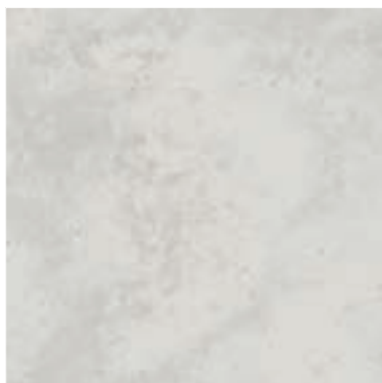
Supreme



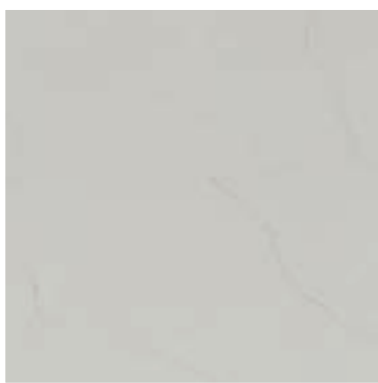
Loam VL155



Cloudbank VC118



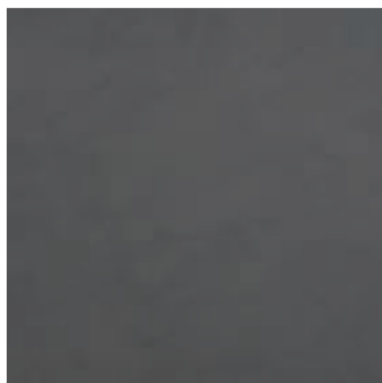
Dawn VD126



Urban Grey VU127



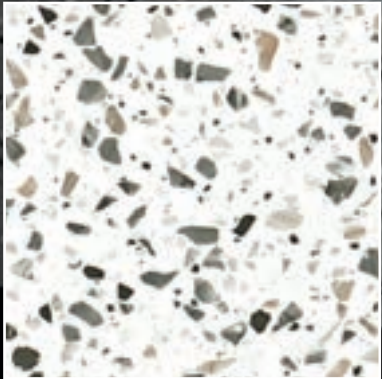
Ash Concrete VA129



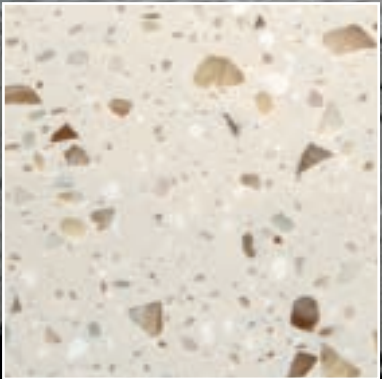
Grigio Concrete VG180



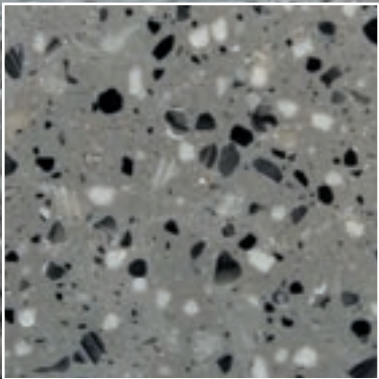
Ash Concrete



Terrazzo Venezia
NT150



Terrazzo Bologna
NT970



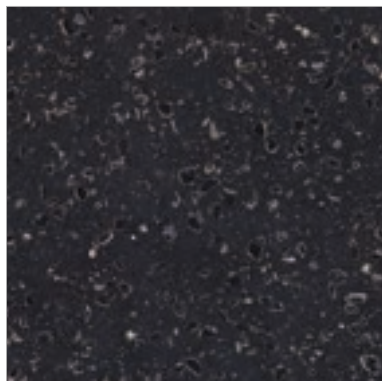
Terrazzo Torino
NT981

Terrazzo Torino

Quarry



Mosaic Dalmatian
QD212



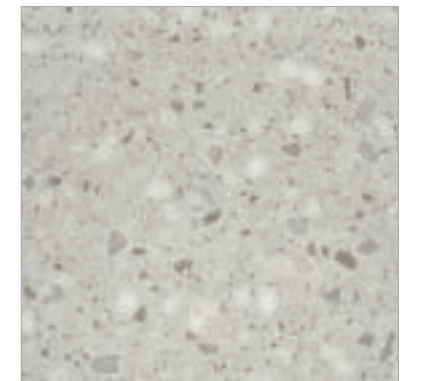
Mosaic Nimbus
QN287



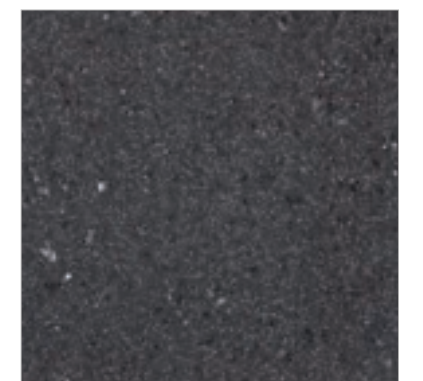
Quarry Oyster
TO310



Quarry Ridge
QR278



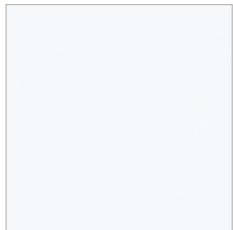
Quarry Greige
QG229



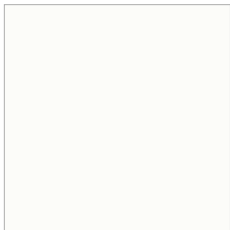
Quarry Starred(N)
QS288

Solid

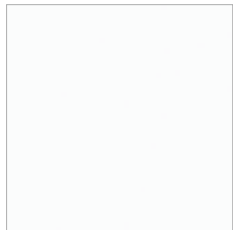
Ultramarine



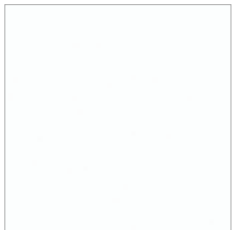
Quasar White
SQ019



Pure white
SP016



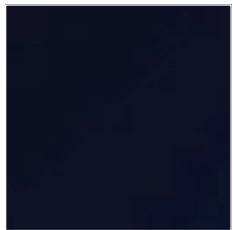
Bright White
BW010



Pearl
SP011



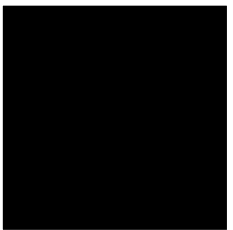
Ivory
SI040



Ultramarine
SU067



Forest
SF061

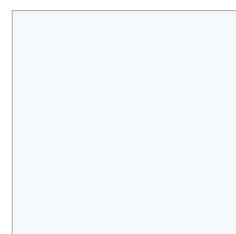


Piano Black
GP790

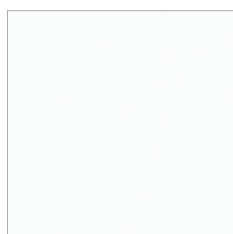
Exterior wall Cladding



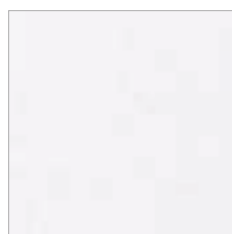
Plumeria House
Bright White
Bangkok, Thailand



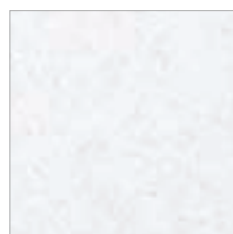
Quasar White
SQ019



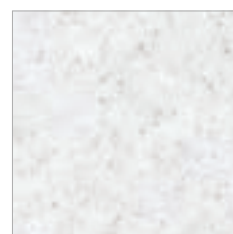
Bright White
BW010



Sanded Icicle
SI414



Aspen Snow
AS610



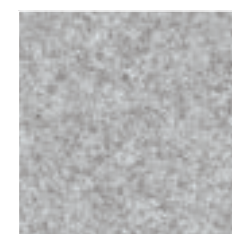
Sanded White Pepper
WP410



Sanded Vermillion
SV430



Sanded Sahara
SS440



Sanded Grey
SG420



Pearl
SPO11



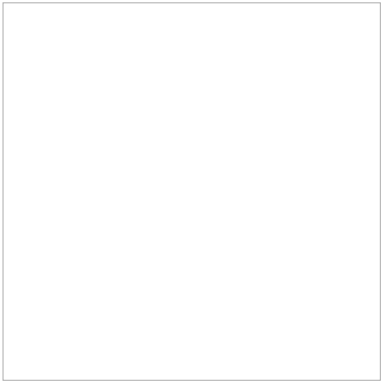
Pure white
SPO16

Ultra-Hygienic Material Solution for Healthcare

evermoin

The healthiest choice for your design

evermoin® Ultra-Hygienic material/surface from staron® can be applied to almost any interior space within a healthcare facility. Imagine casework, work-stations and wall-cladding in a functional and renewable material that is durable as well as ultra-hygienic. Achieve the perfect blend of simplicity in design with an ultra-hygienic surface that is engineered for a healthier life.



Evermoin Angel White
MA020

Benefit of evermoin®

Ultra-Hygienic

Speedy ultra-hygienic effect and action on representative bacteria and fungi

Durability

Excellent Ultra-Hygienic retention and Confirmed quality on stability and durability

Safety

Material certification harmless to human body and environment (EPA, NSF, FDA)

Safety Properties

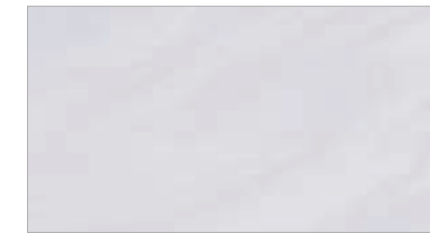
Obtained certification, such as Japan SIAA, US NSF, and FDA, that guarantees sanitary safety and reliability to be harmless to human environments.

Harmless to human body	Safe for food contact
 <p>SIAA Society of International sustaining growth for Ultra-Hygienic Articles</p>	 <p>NSF National Sanitation Foundation</p>

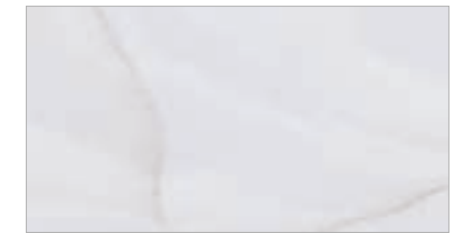




Downy Cream VC343



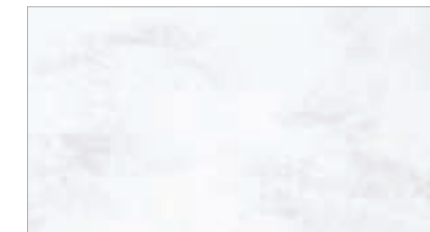
Snowfall VS324



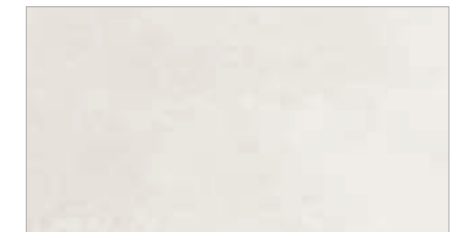
Rotor Cloud VR322



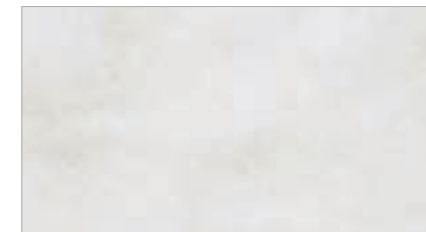
Downy Dove SP105



Downy Grey VG321



Flux VF113



Reno VR184



Latte Cream VL343



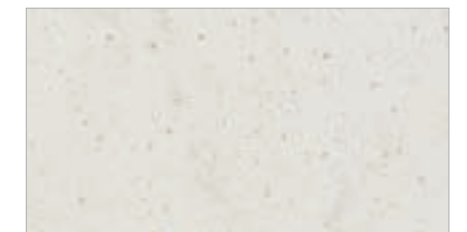
Ocean View VO171



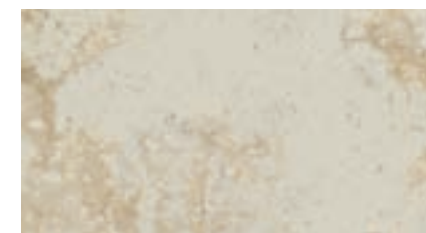
Beige Granite VB172



Magnolia VM143



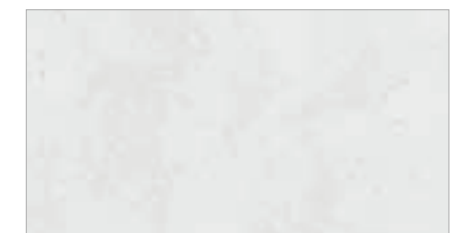
Natural Bridge VN144



Dandelion VD175



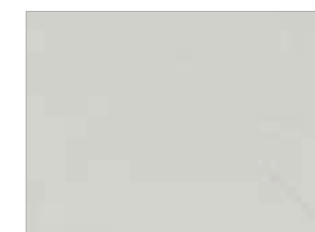
Loam VL155



Cloudbank VC118



Dawn VD126



Urban Grey VU127



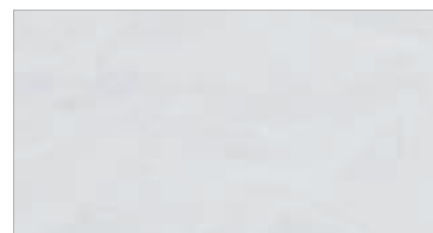
Ash Concrete VA129



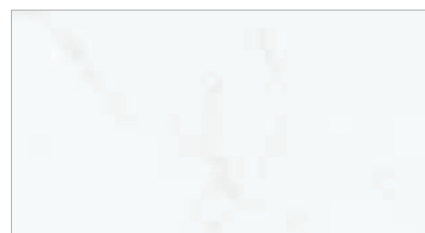
Grigio Concrete VG180

COLORS OF STARON

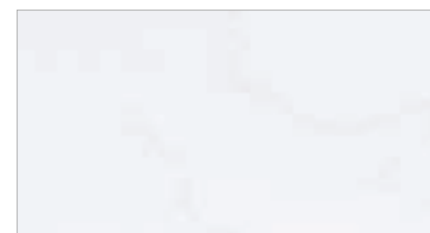
SUPREME



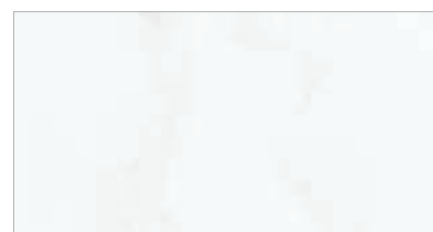
Arctic White VA311



Morning Sky VM114



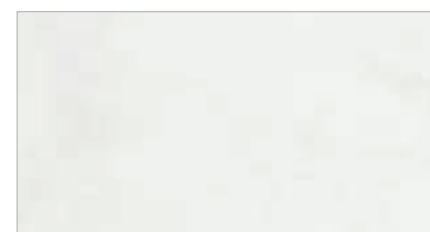
Cotton White VC110



Delphi VD111



Downy White SF100



Tranquil VT115

NEW ECLIPSE

Exemplifying durability through the exclusive use of individual sand chips. Enhanced with fine delicate particles to subtly shimmer at different angles.



Eclipse White SW412



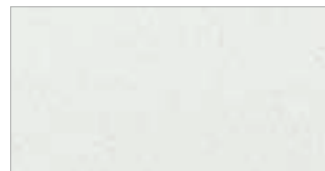
Eclipse Luna SL477



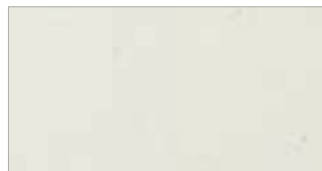
Eclipse Cream SC444

NEW STUCCO

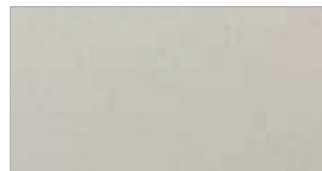
Moving beyond the typical blend of large and small chips, our design cultivates a serene atmosphere. The base features a subtle, feather-like pattern with occasional inclusion of semi-transparent chips, creating a visual effect reminiscent of finely embedded pebbles in a polished wall.



Stucco Cotton NC912



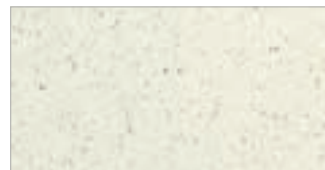
Stucco Angora NA972



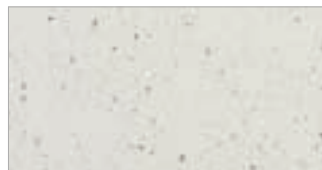
Stucco Earth NE945

NEW TEMPEST STELLA

The previously flashy identity of the Tempest was left behind, creating a sense of luxury that is not burdensome by combining the colors commonly used in interior design. Utilizing a foundation of White, with complementary additions of Beige and Grey.



Lyra FL175

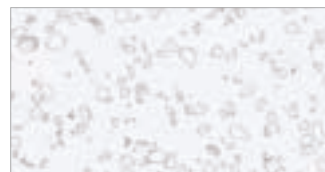


Vela FV126



Grus FG188

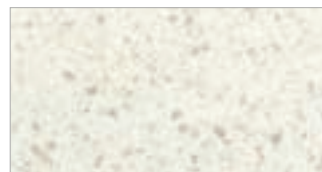
QUARRY



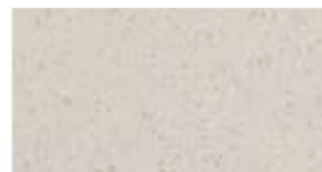
Mosaic Dalmatian QD212



Mosaic Nimbus QN287



Quarry Oyster TO310



Quarry Ridge QR278



Quarry Greige QG229



Quarry Starred(N) QS288

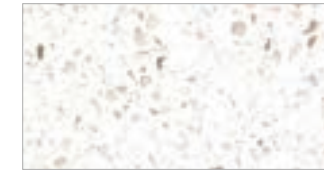
TEMPEST



Peak FP100



Coconut FC112



Confection FC116



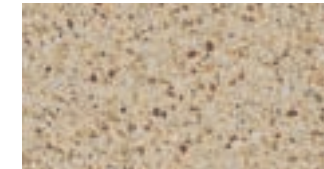
Horizon FH114



Whippoorwill FW145



Glimmer FG144



Caraway FC155

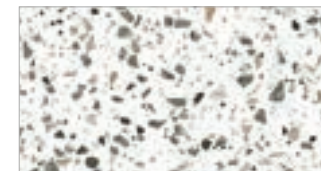


Igneous FI187

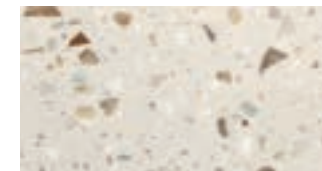


Radiance(Shimmer) FR148

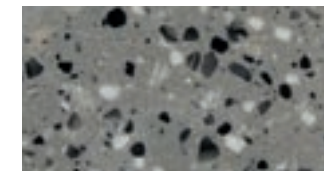
TERRAZZO



Terrazzo Venezia NT150



Terrazzo Bologna NT970

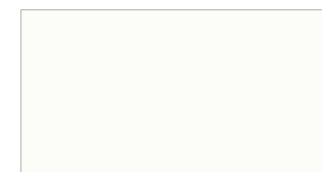


Terrazzo Torino NT981

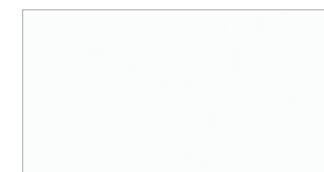
SOLID



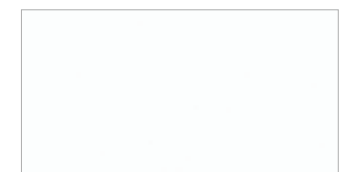
Quasar White SQ019 ☼



Pure white SP016 ♻️



Bright White BW010 ☼



Pearl SP011 ☼



Ivory SI040



Ultramarine SU067



Forest SF061

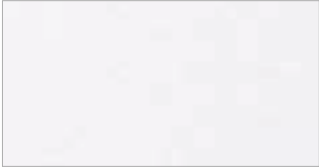


Piano Black GP790

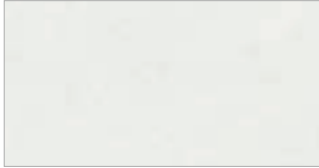
SANDED



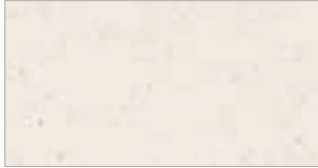
Sanded Birch SB412



Sanded Icicle SI414



Sanded Cream SM421



Sanded Linen SL443



Sanded Sahara SS440



Sanded Gold Dust SG441



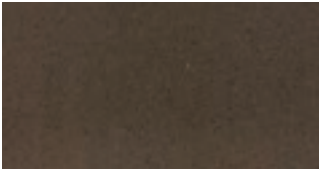
Sanded Cornmeal SC433



Sanded Vermillion SV430



Sanded Mocha SM453



Sanded Chestnut SC457



Sanded White Pepper WP410



Sanded Grey SG420



Sanded Tundra ST482



Sanded Taupe ST486



Sanded Onyx SO423

PEBBLE



Pebble Frost PF812



Pebble Swan PS813



Pebble Saratoga PS820



Pebble Chiffon PC842



Pebble Gold PG840



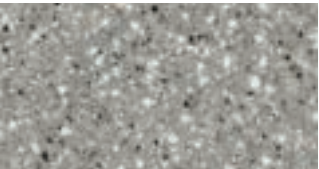
Pebble Seastar PS843



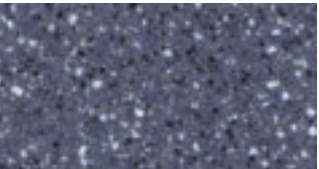
Pebble TeaRose PT845



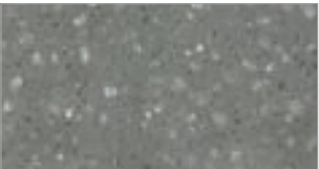
Pebble Boulder PB852



Pebble Grey PG810



Pebble Blue PB870



Collina Urbanity PU886

ASPEN



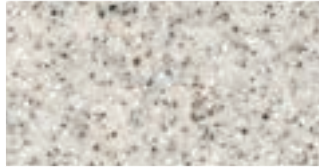
Aspen Eggshell AE642



Aspen Lily AL645



Aspen Cliff AC652



Aspen Pepper AP640



Aspen Brown AB632



Aspen Snow AS610

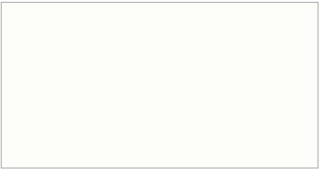


Aspen Alder AA625



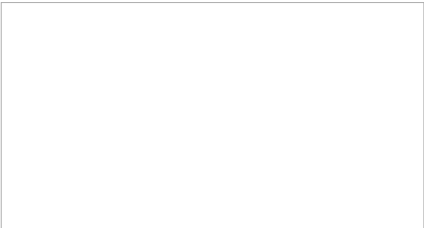
Aspen Concrete AC629

METALLIC



Metallic Yukon EY510

EVERMOIN (ULTRA-HYGIENIC)



Evermoin Angel White MAO20

Eco-Friendly Materials, Staron

Printed representation of colors may vary from actual samples. Please review actual sample prior to selection.

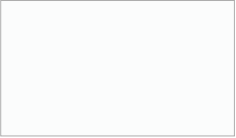
• To view new colors in greater detail, please visit www.staron.com


- Translucent
- Exterior Material
- Ultra-Hygienic
- Eco-Friendly

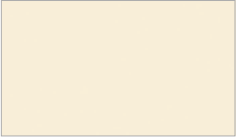
SINKS & BOWLS


Staron solid surface sinks and bowls can be installed together with the all-acrylic sheet to achieve a seamless appearance and more smooth and polished fit. The continuous transition from sink to surface leaves no seams for bacteria or mold to accumulate and grow, making Staron’s non-porous solid surfaces as the most desirable choice for hygienic interior commercial applications. Staron sinks come in five following colors in sixteen popular models:


COLOR OPTIONS


Bright White BW010

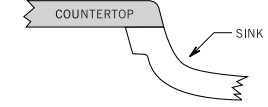

Pearl SPO11

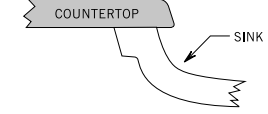

Ivory SIO40


Pure white SPO16


Quasar White SQ019

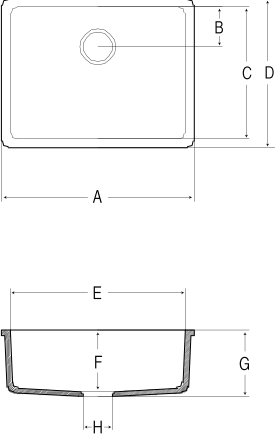
MOUNTING OPTIONS


Seam mount


Under mount

NEW

B1212



A 22.87in (581mm)

B 4.8in (122mm)

C 15.74in (400mm)

D 17.75in (451mm)

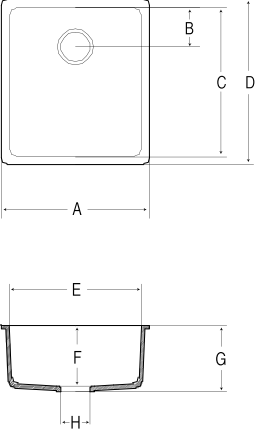
E 20.86in (530mm)

F 7.28in (185mm)

G 7.87in (200mm)

H 3.54in (90mm)

B1177



A 17.71in (450mm)

B 4.72in (120mm)

C 17.71in (450mm)

D 19.68in (500mm)

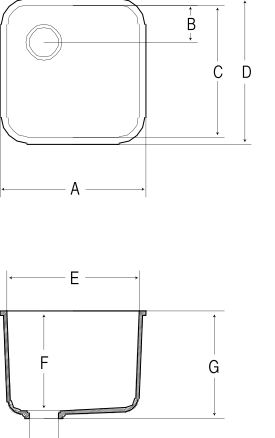
E 15.74in (400mm)

F 7.28in (185mm)

G 7.87in (200mm)

H 3.54in (90mm)

B1160



A 17.32in (440mm)

B 4.4in (112mm)

C 15.74in (400mm)

D 17.32in (440mm)

E 15.74in (400mm)

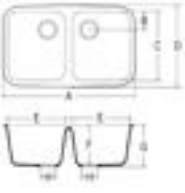
F 11.81in (300mm)

G 12.79in (325mm)

H 3.54in (90mm)

KITCHEN / UTILITY SINKS

A2311



A 31.25in (794mm)

B 4.33in (110mm)

C 16.57in (421mm)

D 18.93in (481mm)

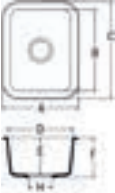
E 13.70in (348mm)

F 9.25in (235mm)

G 9.84in (250mm)

H 3.54in (90mm)

A1121



A 12.83in (326mm)

B 14.01in (356mm)

C 16.37in (416mm)


D 10.47in (266mm)

E 6.49in (165mm)

F 7.08in (180mm)

G 3.54in (90mm)

A1231



A 23.30in (592mm)

B 16.61in (422mm)

C 18.97in (482mm)

D 20.94in (532mm)

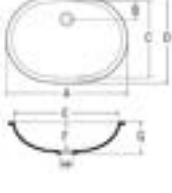
E 7.36in (187mm)

F 7.95in (202mm)

G 3.54in (90mm)

LAVATORY SINKS / BASINS

A3211



A 21.57in (548mm)

B 3.38in (86mm)

C 14.01in (356mm)

D 15.59in (396mm)

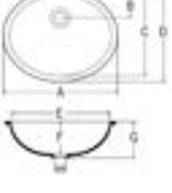
E 20.00in (508mm)

F 6.14in (156mm)

G 6.81in (173mm)

H 1.77in (45mm)

A3181



A 18.18in (462mm)

B 3.70in (94mm)

C 13.22in (336mm)

D 14.80in (376mm)

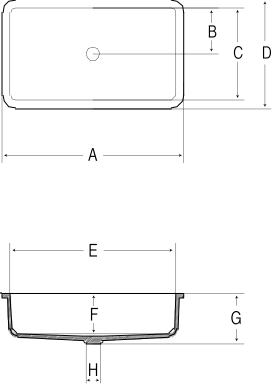
E 16.61in (422mm)

F 5.47in (139mm)

G 6.14in (156mm)

H 1.77in (45mm)

B3200



A 21.65in (550mm)

B 5.51in (140mm)

C 11.02in (280mm)

D 12.99in (330mm)

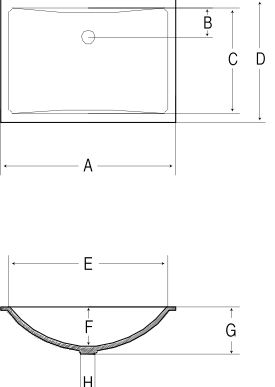
E 19.68in (500mm)

F 4.72in (120mm)

G 5.51in (140mm)

H 1.73in (44mm)

B3192



A 20.86in (530mm)

B 3.5in (89mm)

C 12.59in (320mm)

D 14.56in (370mm)

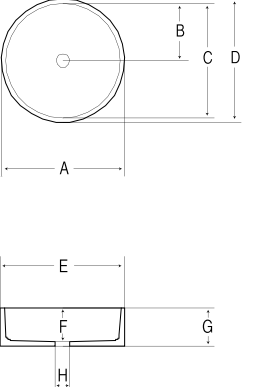
E 18.89in (480mm)

F 4.76in (121mm)

G 5.55in (141mm)

H 1.73in (44mm)

A3148



A 14.8in (376mm)

B 6.88in (175mm)

C 13.77in (350mm)

D 14.8in (376mm)


E 13.77in (350mm)

F 3.81in (97mm)

G 4.52in (115mm)

H 1.73in (44mm)

A1181



A 18.11in (460mm)

B 15.75in (400mm)

C 18.11in (460mm)


D 15.75in (400mm)

E 8.18in (208mm)

F 8.85in (225mm)

G 3.54in (90mm)

B3290



A 29.52in (750mm)

B 15.75in (400mm)

C 17.64in (450mm)


D 27.48in (700mm)

E 7.28in (185mm)

F 7.87in (200mm)

G 3.54in (90mm)

B3180



A 17.67in (450mm)

B 15.75in (400mm)

C 17.67in (450mm)

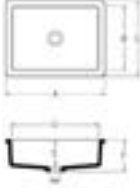
D 15.75in (400mm)

E 6.89in (175mm)

F 7.48in (190mm)

G 3.54in (90mm)

B3150



A 16.81in (427mm)

B 10.94in (278mm)

C 12.87in (327mm)


D 14.88in (378mm)

E 4.57in (116mm)

F 5.43in (138mm)

G 1.77in (45mm)

B3190



A 20.63in (524mm)

B 10.79in (274mm)

C 12.87in (327mm)

D 18.66in (474mm)

E 4.57in (116mm)

F 5.43in (138mm)

G 1.77in (45mm)

PERFORMANCE PROPERTIES

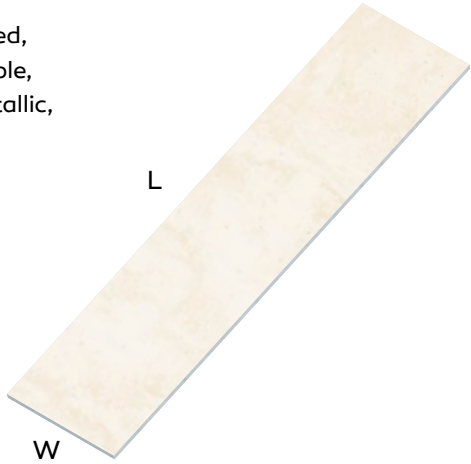
The information contained herein is provided by LOTTE CHEMICAL Co., Ltd. and subsidiaries and affiliates for information purposes only and should be used by individuals with technical experience and knowledge in the area. LOTTE CHEMICAL does not make any representation or warranties of the usefulness or expected result of the information, and does not assume any responsibility whatsoever related to the use of the information. Exclusion of the implied warranties may not apply in certain jurisdictions.

PROPERTY	TEST RESULT	TEST PROCEDURE
Tensile strength	6,000 psi	ASTM D 638
Tensile modulus	600,000 psi	ASTM D 638
Flexural strength	10,000 psi	ASTM D 790
Flexural modulus	1,000,000 psi	ASTM D 790
Elongation	0.5%	ASTM D 638
Hardness	92 Rockwell “M” Scale 65 Barcol impressor	ASTM D 785 ASTM D 2583
Thermal expansion	2.0x1.0 ⁻⁵ in/in F°	ASTM D 696
Gloss (60 Gardner)	Between 5-20	NEMA LD-3
Color stability	No change-200hrs	NEMA LD-3
Stain resistance	Passed Rating 41	ANSIZ 124
Abrasion resistance	Passed	ANSIZ 124
Boiling water surface resistance	No effect	NEMA LD-3
High temperature resistance	No effect	NEMA LD-3
IZON Impact resistance (Notched)	0.28ft. lbf/in	ASTM D 256
Ball drop 1/2” (12 mm) sheet	144”w/1/2lb ball No failure	NEMA LD-3
Fungi and Bacterial resistance	No growth	ASTM G 21, G22
Specific gravity Solid colors Pattereded colors	1.72 1.69	ASTM D 792
Water absorption	0.04%, (1/2”, 24hrs) 0.11%, (1/8”, 24hrs)	ASTM D 570
Flammability Flame spread Smoke density	Class A/Class 1 10 10	UBC 8-1 ASTM E 84 ASTM E 84
Radiant heat resistance	No visual effect	NEMA LD-3
Toxicity	84.4g (Solid color) 81.8g (Patterned color)	Pittsburgh test protocol (LC50 Test)

PRODUCT DIMENSIONS

COLLECTION

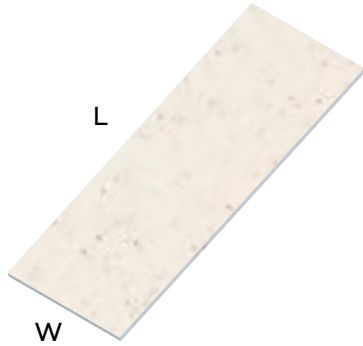
Solid, Sanded,
Aspen, Pebble,
Quarry, Metallic,
Tempest,
Supreme



THICKNESS	WIDTH	LENGTH
mm	mm	mm
12 (1/2")	760 (30")	3,680 (145")

COLLECTION

Solid, Sanded,
Aspen, Metallic



THICKNESS	WIDTH	LENGTH
mm	mm	mm
6 (1/4")	760 (30")	2,500 (98")

- Bright White with wider widths is available. Widths of 1350mm and 930mm with the thickness of 6mm, 9mm and 12mm are available.
- Panel thicknesses of 9mm and 19mm available on request.
- 6mm thickness sheet is not recommended for horizontal application.
- If there is a specific dimension or size that is required for a particular project, please consult with the local agent or distributor.

STARON® 10-YEAR LIMITED WARRANTY

The 10-year warranty applies to Staron, Tempest and Supreme Collection products that have been installed in an interior, commercial-use or residential application. For more details, please consult with your Staron products distributor, or visit www.staron.com

DISCLAIMER

The information contained herein is provided by LOTTE CHEMICAL Co., Ltd. and LOTTE Chemical California INC. for information purposes only and should be used by individuals with technical experience and knowledge in the area. LOTTE CHEMICAL Co., Ltd. does not make any representation or warranties of the usefulness or expected result of the information, and does not assume any responsibility whatsoever related to the use of the information. Exclusion of the implied warranties may not apply in certain jurisdictions. LOTTE Chemical California INC. is a subsidiary of LOTTE CHEMICAL Co., Ltd.